



# ENDING CHOLERA — A GLOBAL ROADMAP TO 2030

**Marion Martinez Valiente**  
GTFCC Secretariat  
10 december 2024

# CHOLERA — A DISEASE OF INEQUITY

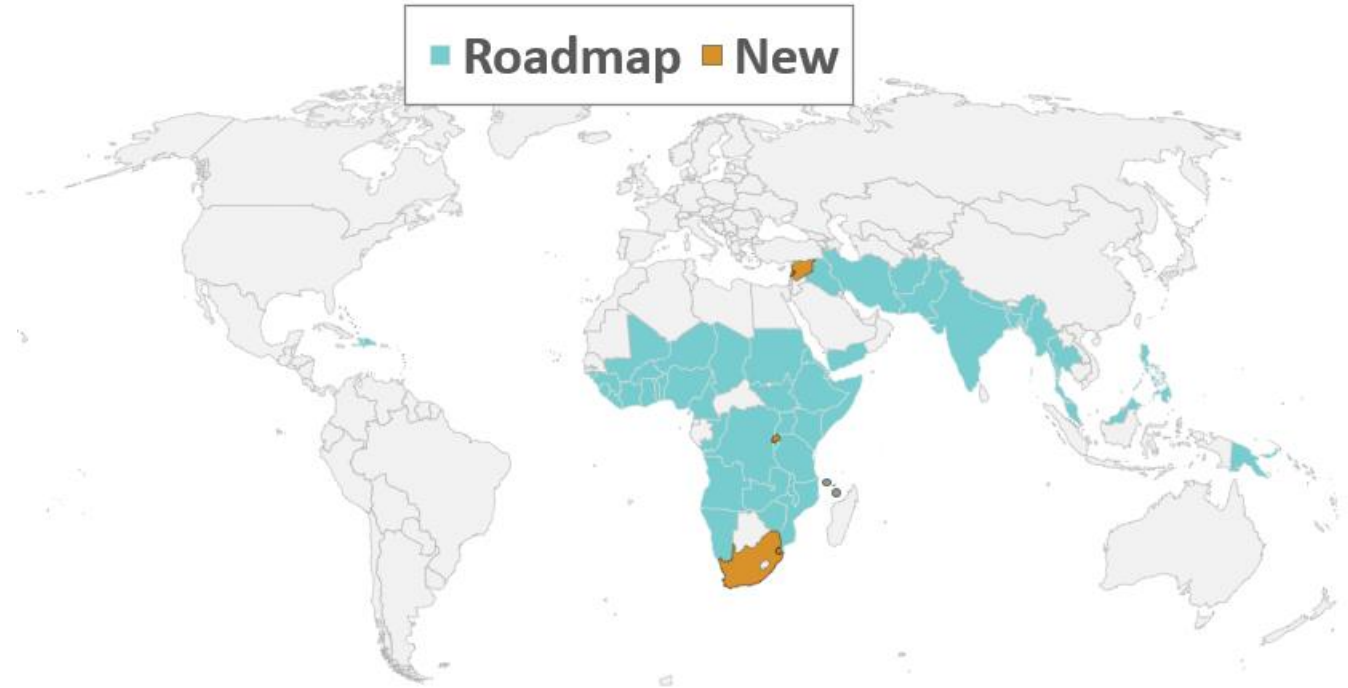
Affects world's poorest, most vulnerable people

- Usual risks and vulnerabilities remain
- Evolving risk – Climate change
- 47 countries initially targeted by the Global Roadmap => 54 now
- The real burden of cholera is underreported

=> Negatively impacting how cholera burden is perceived and allocated resources

- 2015 modelling: 2.9m cases and 95 000 deaths
- <1bn people at risk\*

**GTFCC countries (2017-2024)**



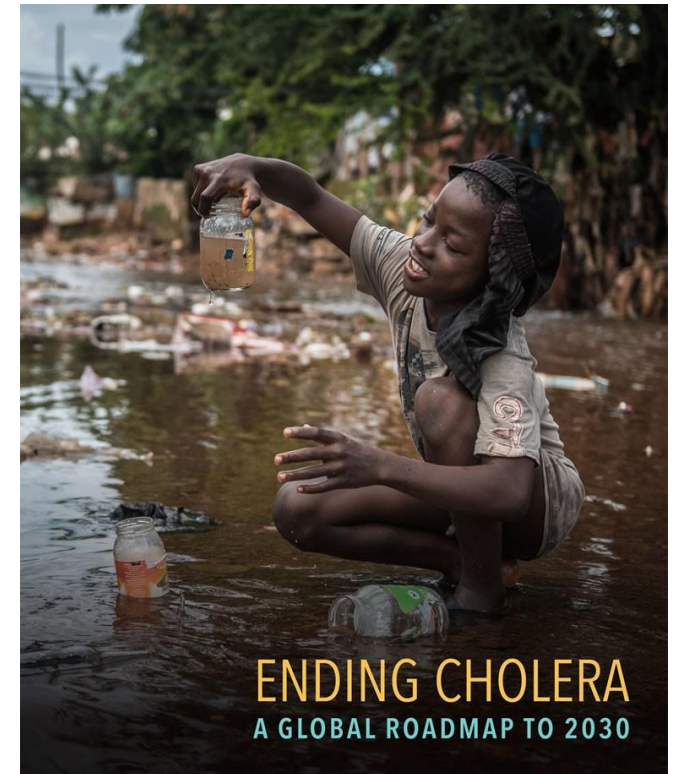
\*in hotspots of 30 countries only

# GTFCC: KEY FIGURES

---

- 1992: Start of the Global Cholera Control Task Force (WHO)
- 2013: Creation of the oral cholera vaccine stockpile
- 2014: Revitalization of the GTFCC, WHA 64.15 resolution, “Cholera mechanisms for control and prevention” – Secretariat and technical working group coordination at WHO
- 2017: Launch of the Global Roadmap
- 2018: 71st WHA resolution, Member States commit to the Roadmap
- 2020: Launch of the GTFCC Research Agenda and establishment of the Country Support Platform (CSP)
- 2017 – 2030: Implementation of the Roadmap





# A BROAD PARTNERSHIP

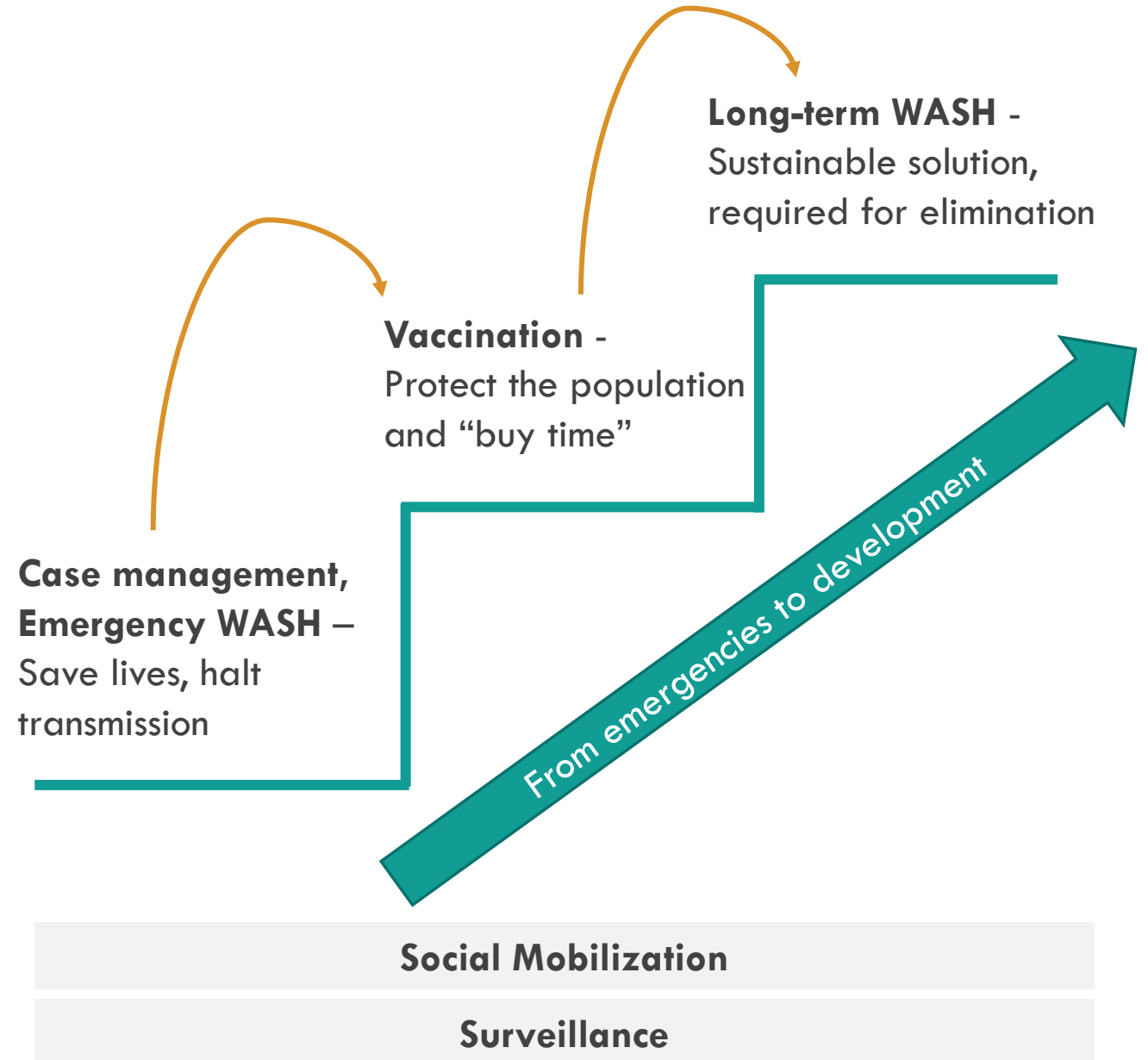
Diversity, Complementarity  
Health & Wash  
Maximizing synergies & impact

# ENDING CHOLERA: A GLOBAL ROADMAP TO 2030



# THEORY OF CHANGE

- From a reactive approach to an approach to prepare for and prevent outbreaks
- We have the tools to end cholera!
- **Target** and **coordinate multisectoral** interventions, leaning on:
  - Strong **surveillance** to target and monitor interventions
  - A clear **coordination** mechanism
  - **Country** commitment
  - An engaged **community**

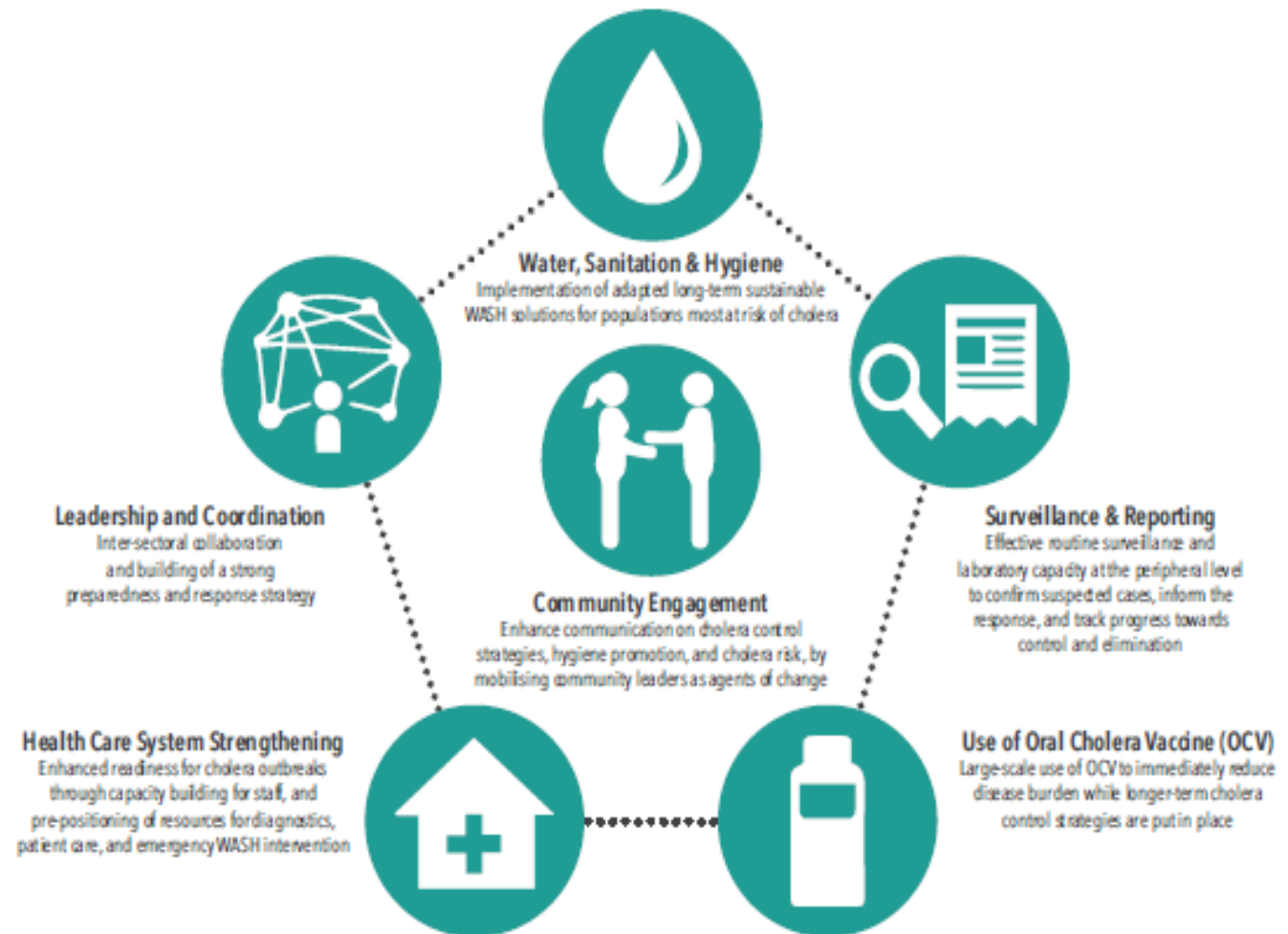


# A PACKAGE OF MEASURES TO CONTROL CHOLERA

The GTFCC encourages countries to develop **National Cholera Control Plans** to plan for and monitor the implementation of cholera control measures



Targeted approach (PAMI)



# NCPs TO ROLL OUT THE GLOBAL ROADMAP IN COUNTRIES



**GLOBAL FRAMEWORK**

**National Cholera Plans will set the parameters for the implementation of the Global Roadmap at national level**

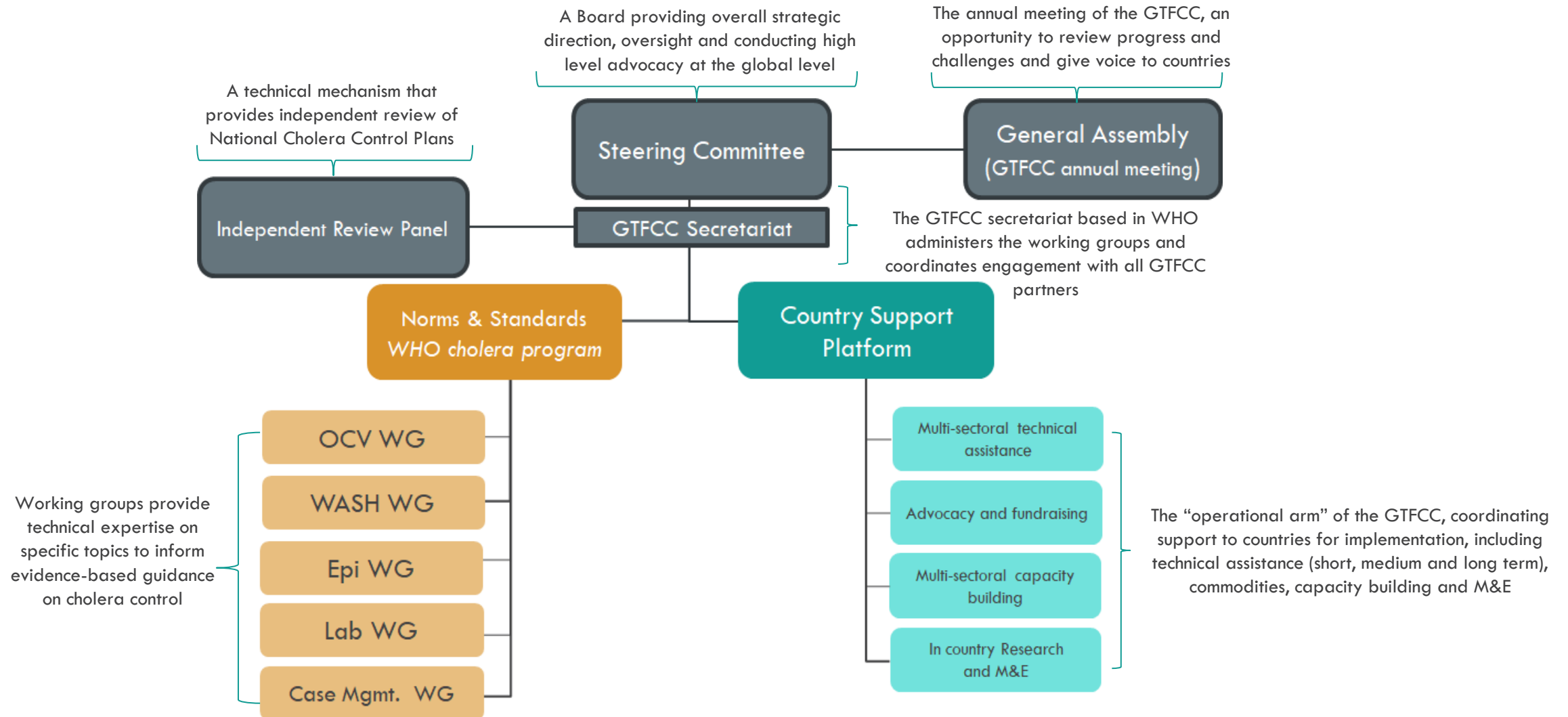
**Countries are encouraged to set their own goal(s) and to identify cholera control activities across the five pillars of the Global Roadmap**

- Surveillance and reporting
- Health care system strengthening
- Use of oral cholera vaccine (OCV)
- Water, sanitation and hygiene (WASH)
- Community engagement

**NATIONAL FRAMEWORKS**



# A STRUCTURE TO SUPPORT THE IMPLEMENTATION



### Identification of Priority Area Multisectoral Intervention (PAMI) using GTFCC tool (2018-2024)\*

■ PAMI < 5 years ■ Ongoing / Planned ■ Outdated / other method ■ NO PAMI ■



# PROGRESS: FOCUS ON PAMI AND NCP

## PAMI with a GTFCC methodology

- ✓ June 2022: 8 countries
- ✓ September 2024: 22 countries

## Finalized NCP

- ✓ June 2022: 4 countries
- ✓ September 2024: 10 countries

### GTFCC NCP status (2018-2024)

■ NCP available ■ In process ■ Considered ■ No NCP ■ New recently affected Non GTFCC



# MEASURING PROGRESS: ANNUAL REPORTING

## Country Annual reports

- ✓ Proportion of the NCP funded
- ✓ Incidence rate of suspected cholera
- ✓ Number of deaths from cholera
- ✓ OCV administrative coverage in hotspots areas vaccinated
- ✓ Proportion of people with access to safe water in hotspots
- ✓ Proportion of the population in hotspots with correct knowledge on cholera prevention

Non exhaustive list – see [NCP Interim Guiding Document](#)

## Global Annual Report on the Implementation of the Roadmap

Published  
and  
accessible  
[Online](#)

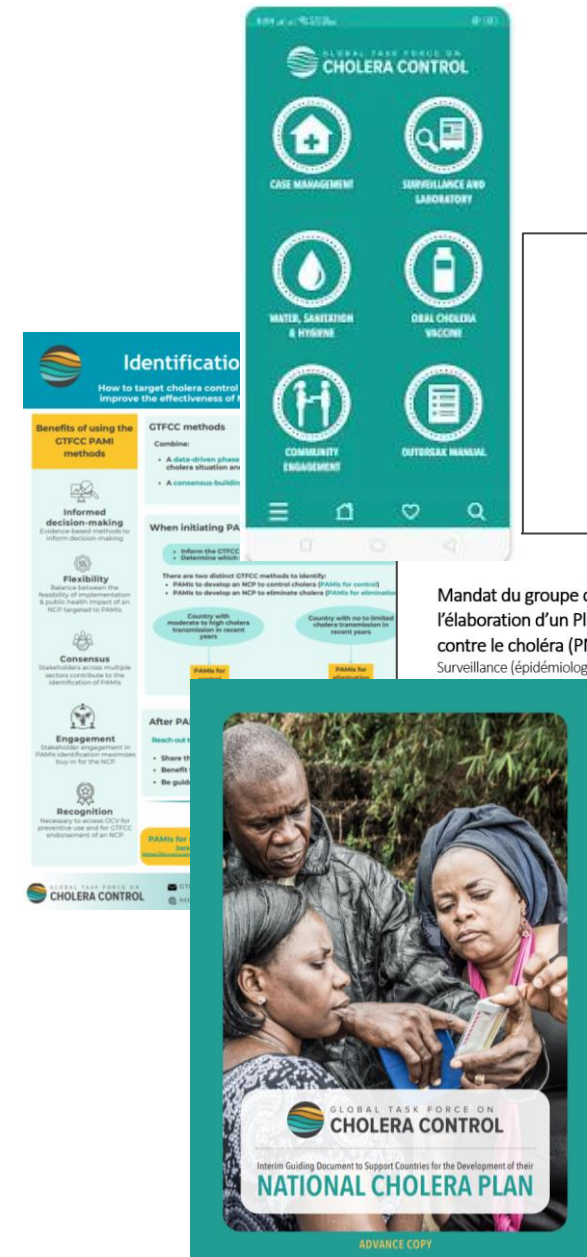
Presented  
at the  
Annual  
Meeting



# GTFCC RESOURCES & TOOLS

- GTFCC [Cholera App](#)
- [NCP Interim Guiding Document](#)
- [Template for National Cholera Plans](#)
- Terms of reference for working groups what to consider when developing the country specific NCP
- [Priority Areas for Multisectoral Interventions \(PAMIs\) – Global Task Force on Cholera Control](#), Technical guidance [Identification of Priority Areas for Multisectoral Interventions \(PAMIs\) for cholera control – Global Task Force on Cholera Control / elimination](#)
- Specific set of guidance and tools per pillar available on the GTFCC website in the [Resources section](#) (use the filter to access the different areas of intervention)

*Tools to support countries in developing the situational analysis or SWOT analysis are under development.*



## Public health surveillance for cholera

Guidance Document  
2024

Mandat du groupe de travail chargé de l'élaboration d'un Plan national de lutte contre le choléra (PNC)  
Surveillance (épidémiologie et laboratoire)

GLOBAL TASK FORCE ON  
CHOLERA CONTROL



# THANK YOU!

[GTFCCSecretariat@who.int](mailto:GTFCCSecretariat@who.int)

[countrysupportplatform@ifrc.org](mailto:countrysupportplatform@ifrc.org)

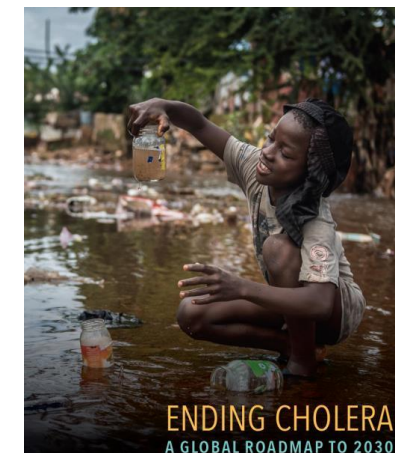
@SecGTFCC

<https://www.gtfcc.org/>

<https://www.gtfcc.org/fr/>



## #EndCholera



**ENDING CHOLERA**  
A GLOBAL ROADMAP TO 2030